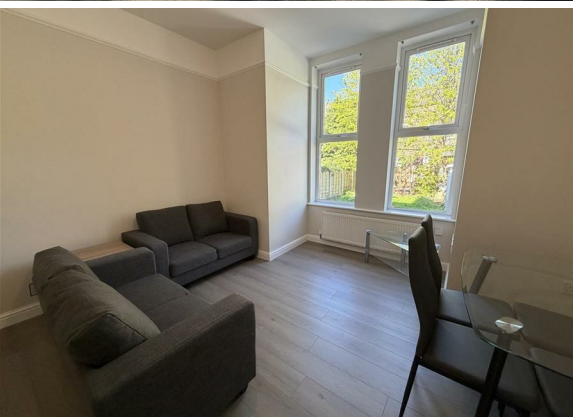


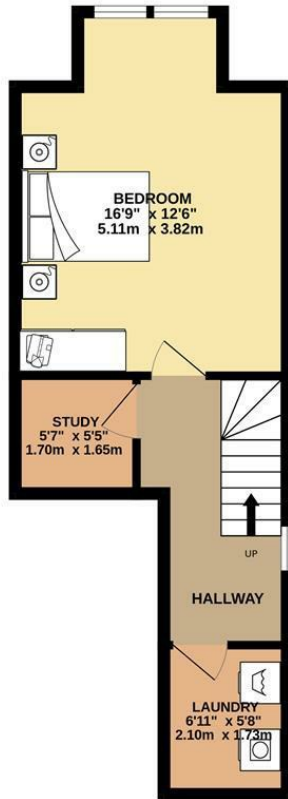


**2 Bed
Apartment
located
in Didsbury**

£1,450 Per Month



BASEMENT
336 sq.ft. (31.3 sq.m.) approx.



GROUND FLOOR
456 sq.ft. (42.4 sq.m.) approx.



TOTAL FLOOR AREA: 793 sq.ft. (73.6 sq.m.) approx.

Whilst every attempt has been made to ensure the accuracy of the floorplan contained here, measurements of doors, windows, rooms and any other items are approximate and no responsibility is taken for any error, omission or mis-statement. This plan is for illustrative purposes only and should be used as such by any prospective purchaser. The services, systems and appliances shown have not been tested and no guarantee as to their operability or efficiency can be given.
Made with Metropix ©2025.

Energy Efficiency Rating		
	Current	Potential
Very energy efficient - lower running costs		
(92 plus) A		
(81-91) B		
(69-80) C		
(55-68) D		
(39-54) E		
(21-38) F		
(1-20) G		
Not energy efficient - higher running costs		
	70	78
England & Wales	EU Directive 2002/91/EC	

DIRECTIONS

CONTACT

31 Barlow Moor Road
Didsbury
Manchester
M20 6TW

E: office@stantonproperties.co.uk
T: 01614345307

